



VQ Vane Pump SERIES

Table of Contents

Order Code - Single Pump	2
Order Code - Double Pump	3
Performance Data - 20VQ	4
Performance Data - 25VQ	5
Performance Data - 35VQ	6
Performance Data - 45VQ	7
Installation Dimension - 20VQ	8
Installation Dimension - 25VQ	9
Installation Dimension - 35VQ	10
Installation Dimension - 45VQ	11
Installation Dimension - 2520VQ	12
Installation Dimension - 3520VQ	13
Installation Dimension - 3525VQ	14
Installation Dimension - 4520VQ	15
Installation Dimension - 4525VQ	16
Installation Dimension - 4535VQ	17
SAE 4-Bolt Flanges	18

(F3) - 25VQ 17 A - 1 C 22 L

 1 2 3 4 5 6 7 8

1 Special Seals

 Omit - (Standard)
 F3 - Viton Seals

2 Series No

 20VQ 25VQ 35VQ
 45VQ

3 Pump (GPM)

 (@1200 RPM, 100 PSI)

20VQ 25VQ 35VQ

 2 10 25
 5 12 30
 8 14 32
 9 17 35
 11 19 38
 12 21
 14

45VQ

 42
 45
 50
 60
 75

4 Port Connection

 A - SAE 4-Bolt Flange (Standard)

5 Shaft Type

 1 - Straight Keyed (Standard)
 151 - Splined
 (20VQ Only)
 11 - Splined
 86 - Straight Keyed
 (Heavy Duty Except 20VQ)

6 Outlet Port Position

 (View From Cover End of Pump)
 A - Opposite Inlet
 B - 90° CCW From Inlet
 C - Inline With Inlet (Standard)
 D - 90° CW From Inlet

7 Design Number

 22 - (Standard)
 10 - Design Change

8 Rotation

 (View From Shaft End of Pump)
 Omit - Right Hand Rotation
 (Standard)
 L - Left Hand Rotation



ITEM	20VQ			25VQ		35VQ		45VQ	
	2,5,8,9,11	12	14	10,12,14	17,19,21	25,30	32,35,38	42,45,50,60	75
MAX SPEED (RPM)	2700			2700	2500	2500	2400	2200	
MAX PRESSURE (PSI)	3000	2300	2000	3000		3000		2500	2000

(F3) - 2520VQ 17 A 11 - 1 C C 22 L

 1 2 3 4 5 6 7 8 9 10

1 Special Seals

Omit - (Standard)
 F3 - Viton Seals

2 Series No

2520VQ	3520VQ	3525VQ
4520VQ	4525VQ	4535VQ

3 Shaft End Pump (GPM)

(@1200 RPM, 100 PSI)
 25**VQ 35**VQ 45**VQ

10	25	42
12	30	45
14	32	50
17	35	60
19	38	75
21		

4 Port Connection

A - SAE 4-Bolt Flange (Standard)

5 Cover End Pump (GPM)

(@1200 RPM, 100 PSI)
 **20VQ **25VQ **35VQ

2	10	25
5	12	30
8	14	32
9	17	35
11	19	38
12	21	
14		

6 Shaft Type

1 - Straight Keyed (Standard)
 11 - Splined
 86 - Straight Keyed (Heavy Duty)

7 Outlet No 1 Port Position

(View From Cover End of Pump)
 A - Opposite Inlet
 B - 90° CCW From Inlet
 C - Inline With Inlet (Standard)
 D - 90° CW From Inlet

8 Outlet No 2 Port Position

(View From Cover End of Pump)
 All Series Except 4535VQ
 A - 135° CCW From Inlet
 B - 45° CCW From Inlet
 C - 45° CW From Inlet (Standard)
 D - 135° CW From Inlet

 Series 4535VQ
 A - Opposite Inlet
 B - 90° CCW From Inlet
 C - Inline with Inlet (Standard)
 D - 90° CW From Inlet

9 Design Number

22 - (Standard)
 10 - Design Change

10 Rotation

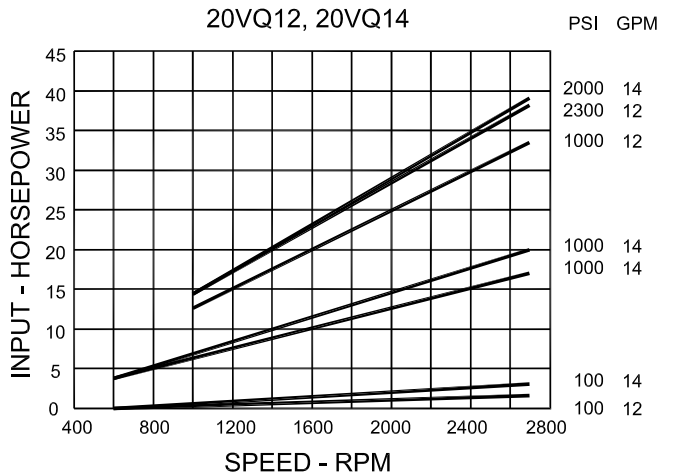
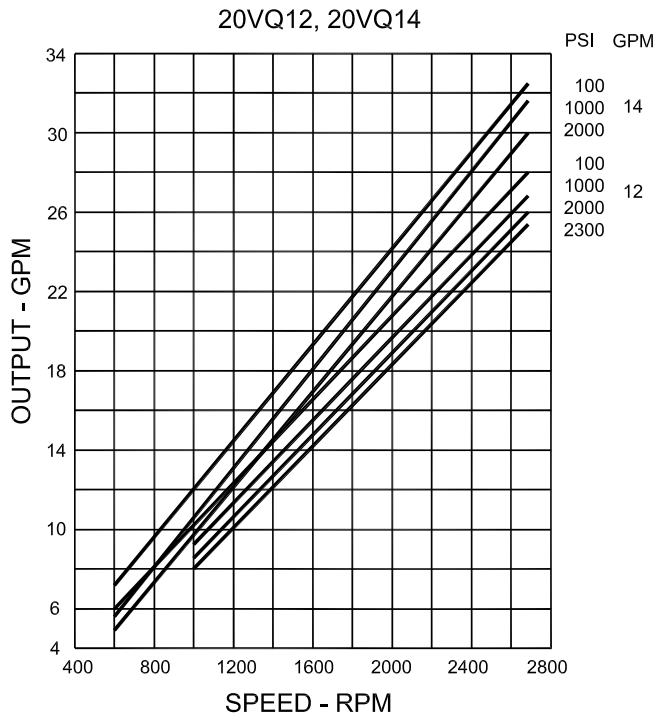
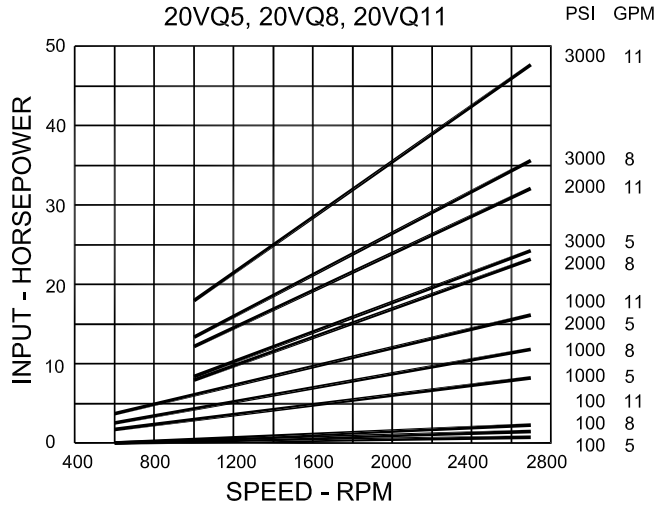
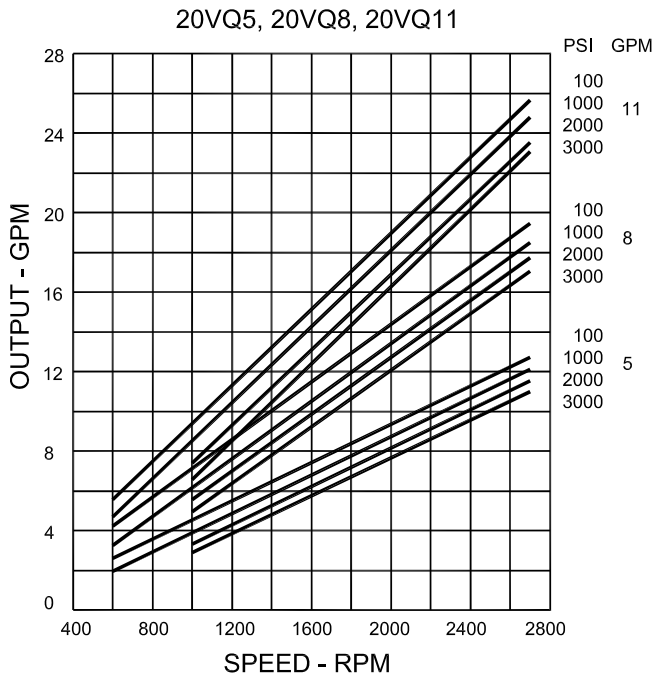
(View From Shaft End of Pump)
 Omit - Right Hand Rotation (Standard)
 L - Left Hand Rotation

NOTE: See Respective Pump Performance in VQ Pump Performance for Double Pump Performance.

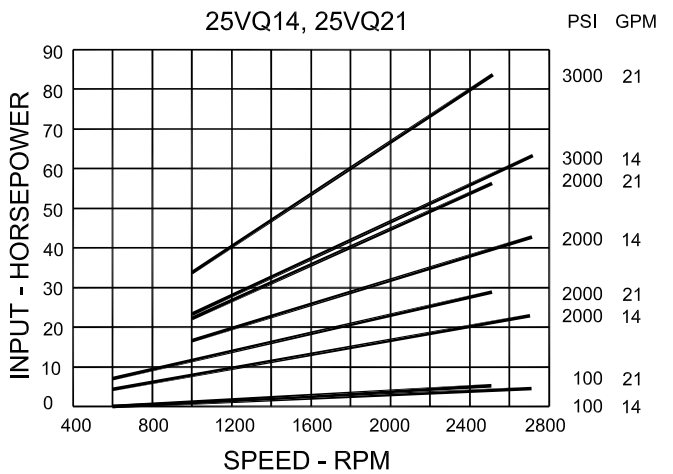
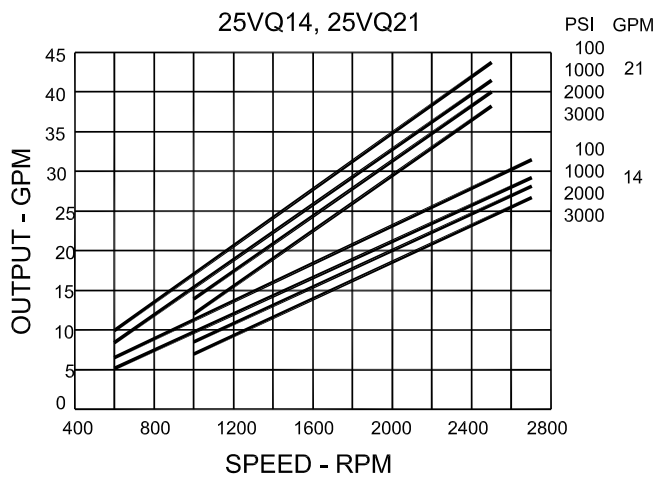
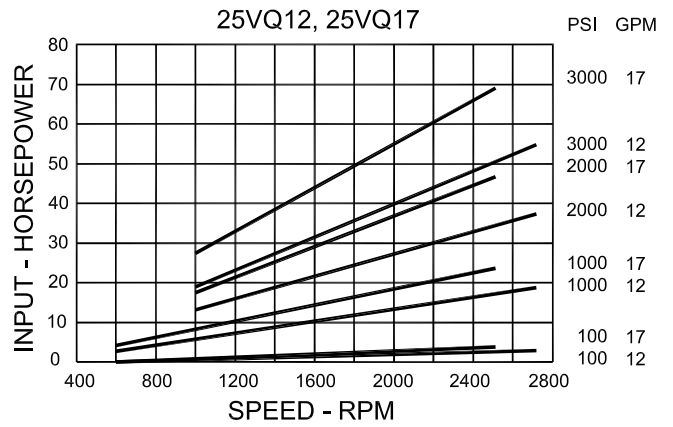
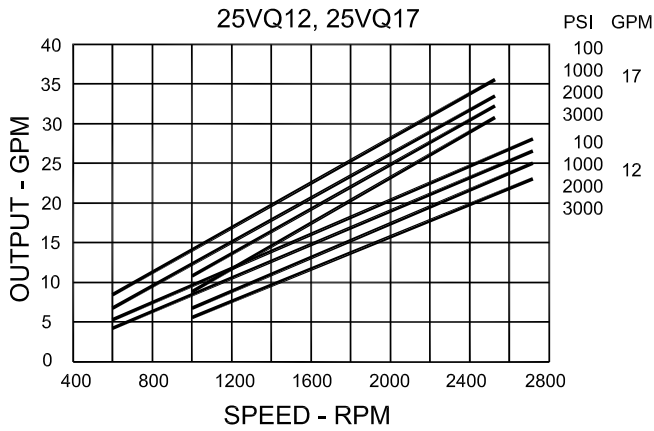


ITEM	**20VQ (FOR 2520VQ)			**20VQ (FOR 3520VQ)			**20VQ (FOR 4520VQ)			25**VQ (FOR 2520VQ)	
	5,8,11	12	14	5,8,11	12	14	2,5,8,9,11	12	14	10,12,14	17,19,21
MAX SPEED (RPM)	2700			2500			2200			2700	2500
MAX PRESSURE (PSI)	3000	2300	2000	3000	2300	2000	3000	2300	2000	3000	

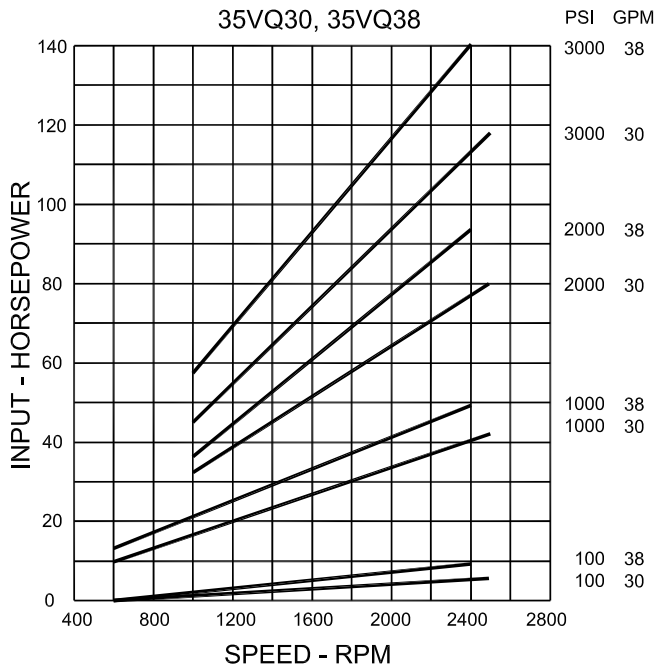
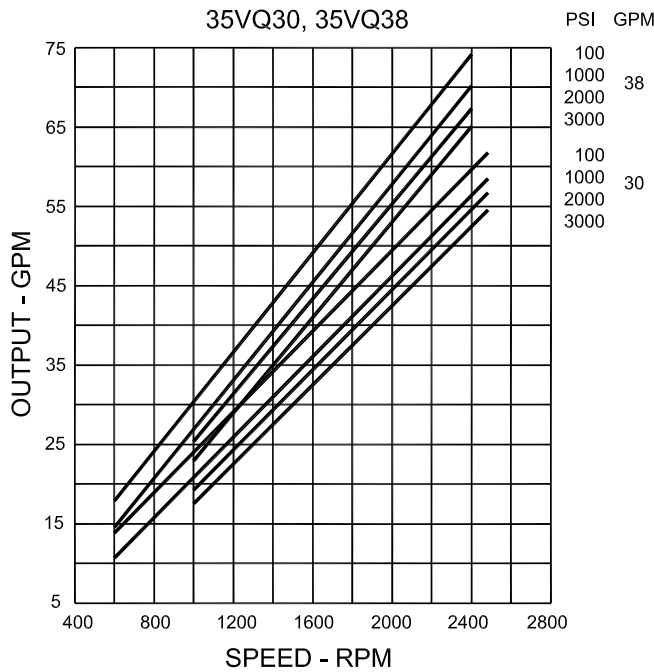
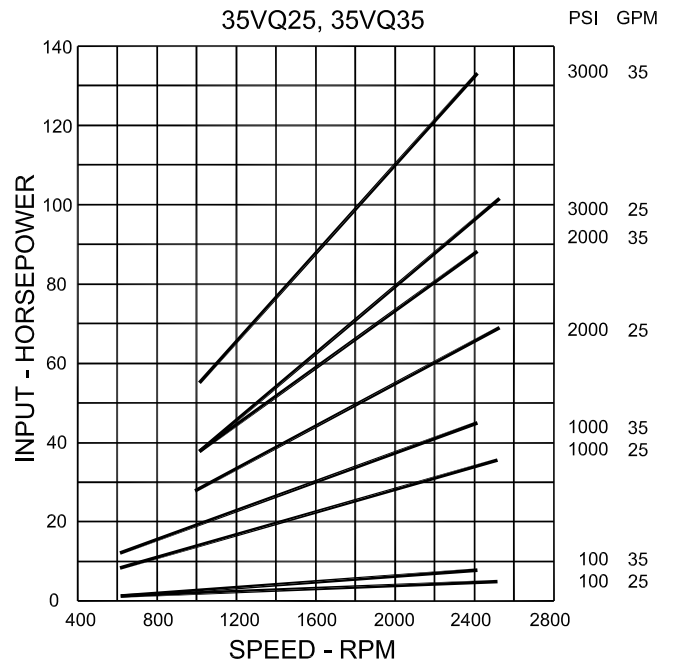
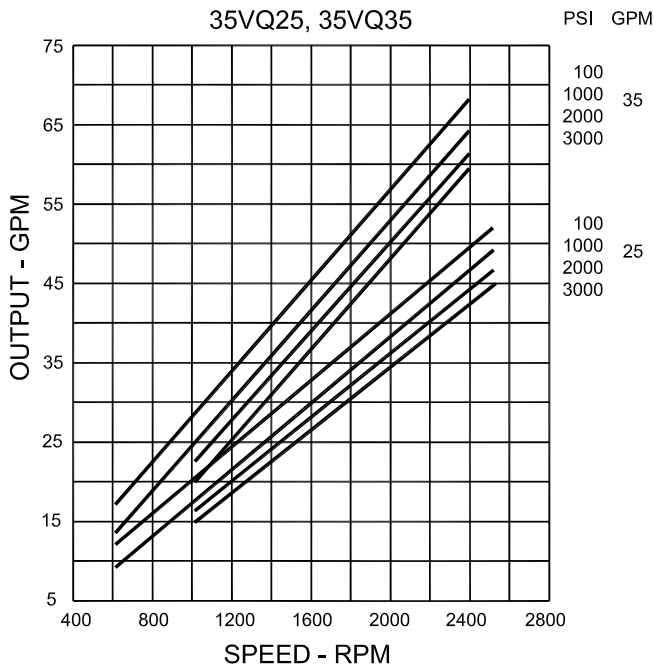
ITEM	**25VQ (FOR 3525VQ)	**25VQ (FOR 4525VQ)	35**VQ		**35VQ	45**VQ	
	10,12,14,17,19,21	10,12,14,17,19,21	25,30	32,35,38	25,30,32,35,38	42,45,50,60	75
MAX SPEED (RPM)	2500	2200	2500	2400	2200	2200	
MAX PRESSURE (PSI)	3000	3000	3000		3000	2500	2000



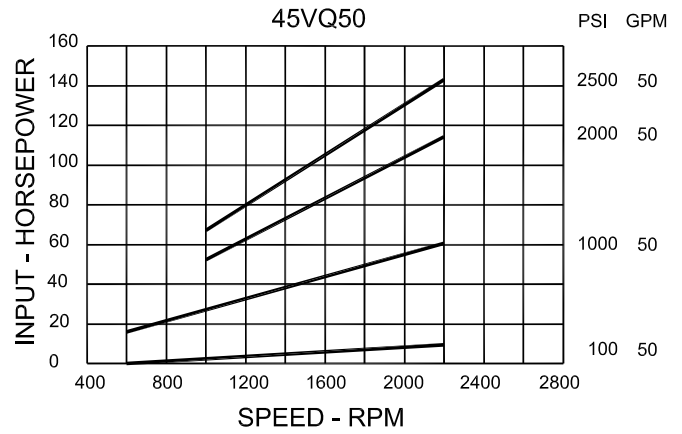
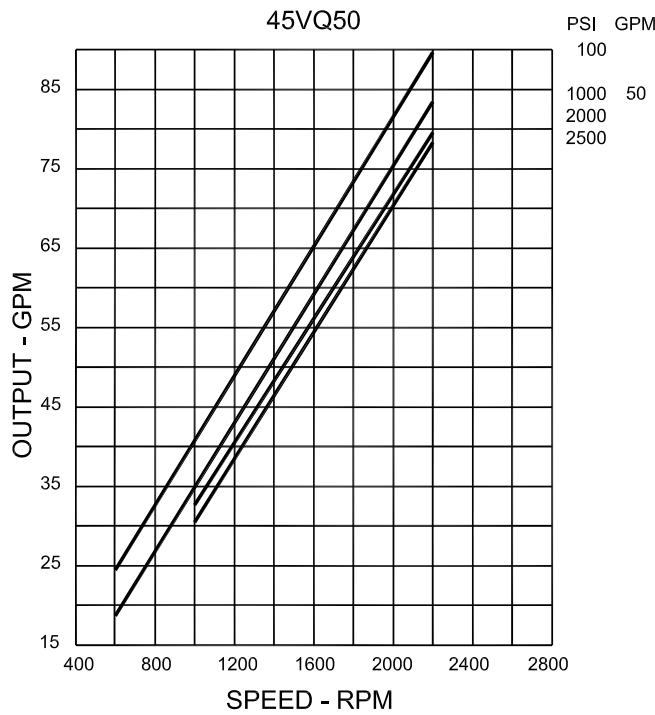
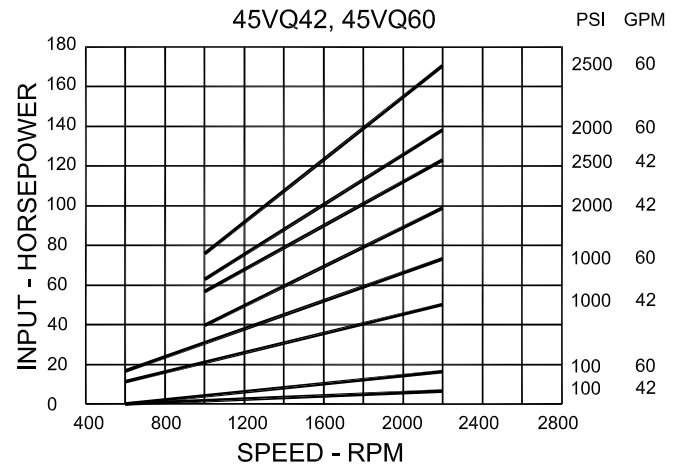
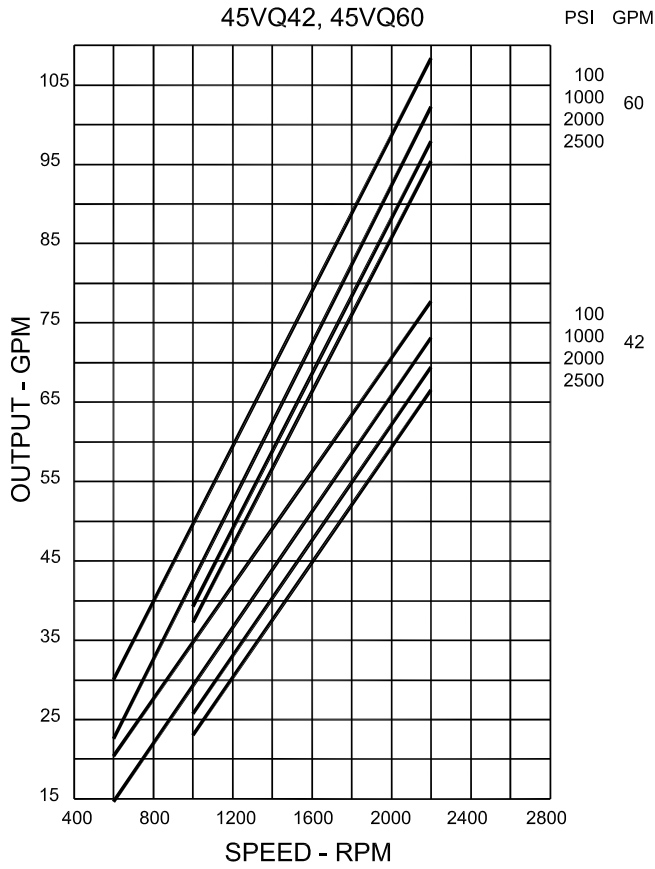
Data Based on SAE 10W Fluid @ 180°F and Pump Inlet @ 0 PSIG (14.7 PSIA)



Data Based on SAE 10W Fluid @ 180°F and Pump Inlet @ 0 PSIG (14.7 PSIA)

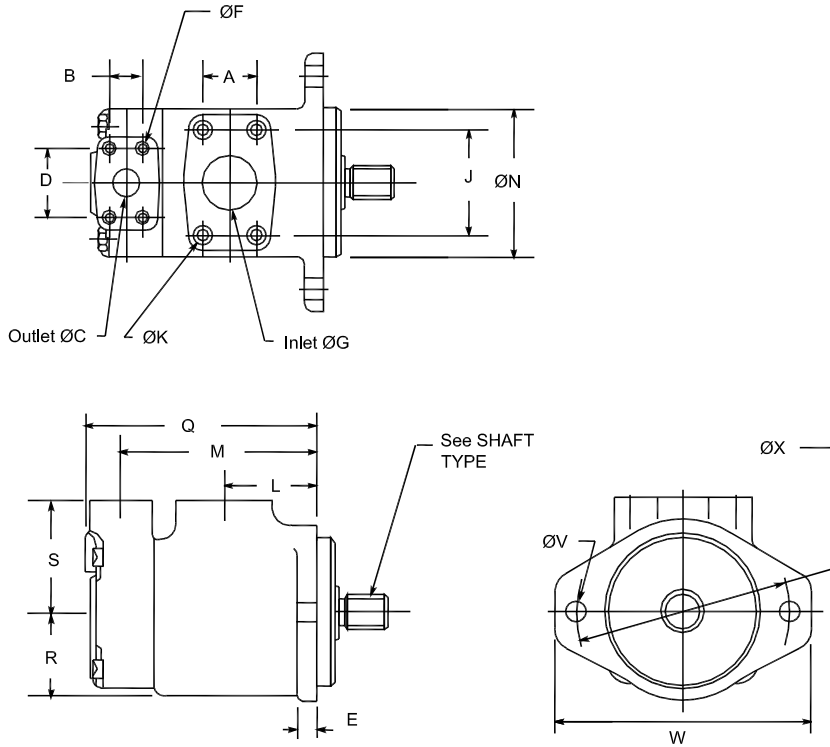


Data Based on SAE 10W Fluid @ 180°F and Pump Inlet @ 0 PSIG (14.7 PSIA)



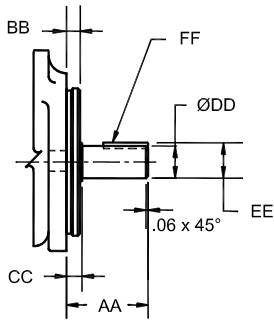
Data Based on SAE 10W Fluid @ 180°F and Pump Inlet @ 0 PSIG (14.7 PSIA)

20VQ INSTALLATION DIMENSION

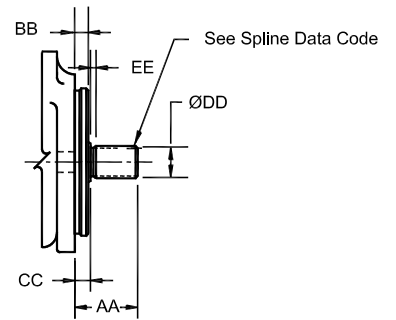


SHAFT TYPE

#1 Straight Shaft

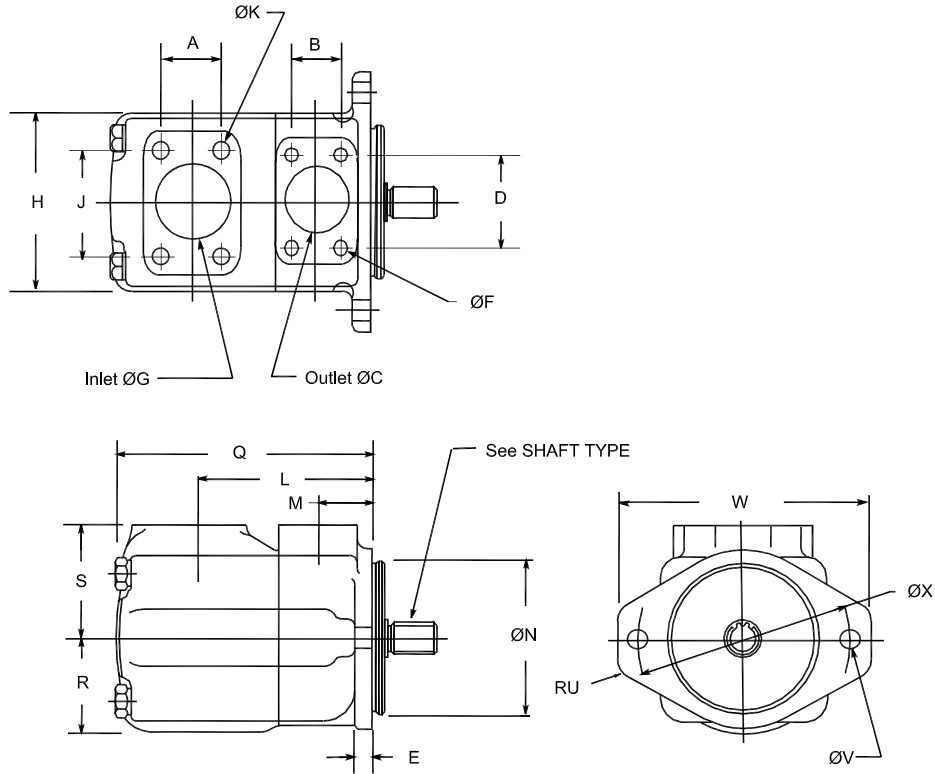


#151 Splined Shaft



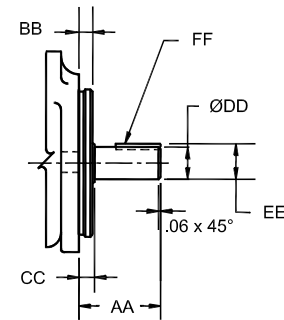
	A	B	ØC	D	E	ØG	J	L	M	ØN
BODY	1.41	0.875	0.75	1.87	0.50	1.50	2.75	2.5	5.22	4.000/3.998
	Q	R	S	ØV x 2	W	ØX				
	6.12	2.2	3.00	0.56	6.875	5.75				
PORT CONN.	ØF x 4 Holes			ØK x 4 Holes			Outlet Flange		Inlet Flange	
	3/8"-16UNC-2B x 0.75			1/2"-13UNC-2B x 0.83			F1-6-		F1-12-	
SHAFT TYPE	Shaft Type	AA	BB	CC	ØDD	EE	FF Key Width x Length			
	1	2.32	.375	.476	.875/.874	.966/.961	.187x1.25			
	Shaft Type	AA	BB	CC	ØDD	EE	Spline Data Code			
	151	1.62	.375	.437	1.09	.156	A (See Below Chart)			
	Spline Data Code	Number of Teeth	Pitch	Major Diameter	Form Diameter	Minor Diameter	Minor Diameter			
	A	13	16/32	.873/.872	.749	.734/.723	Major dia. fit			

25VQ INSTALLATION DIMENSION

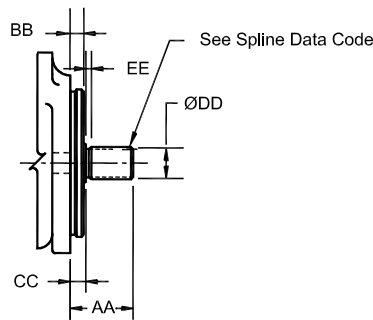


SHAFT TYPE

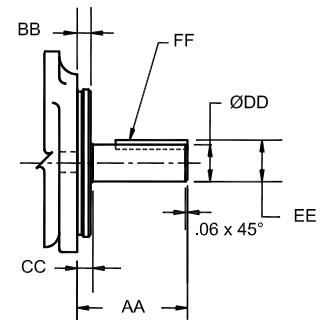
#1 Straight Shaft



#11 Splined Shaft

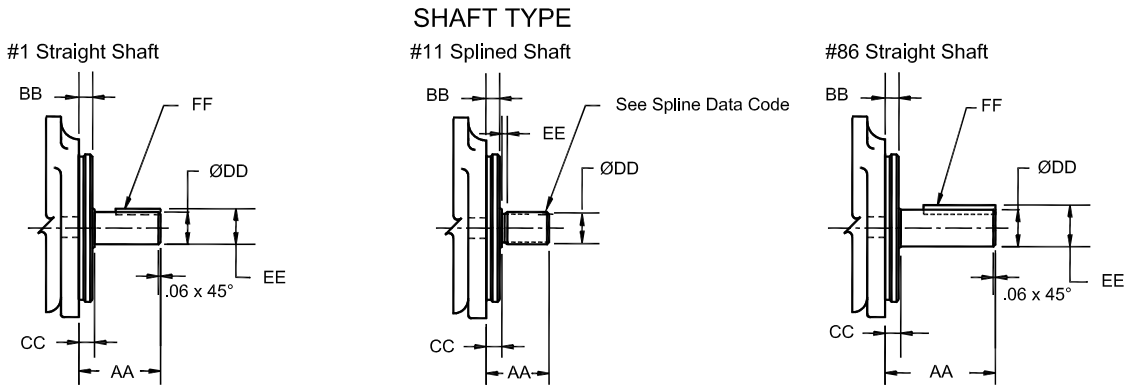
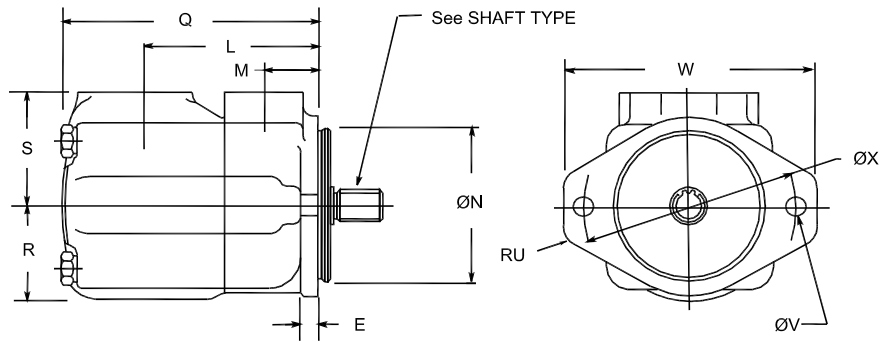
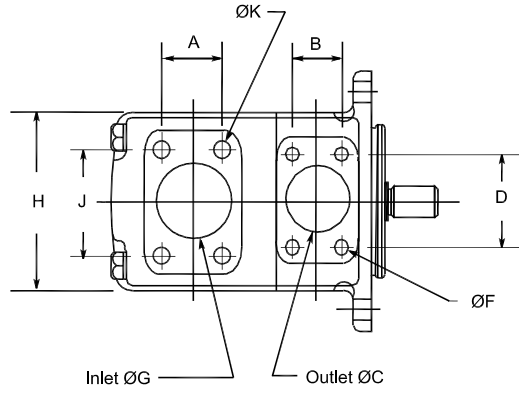


#86 Straight Shaft



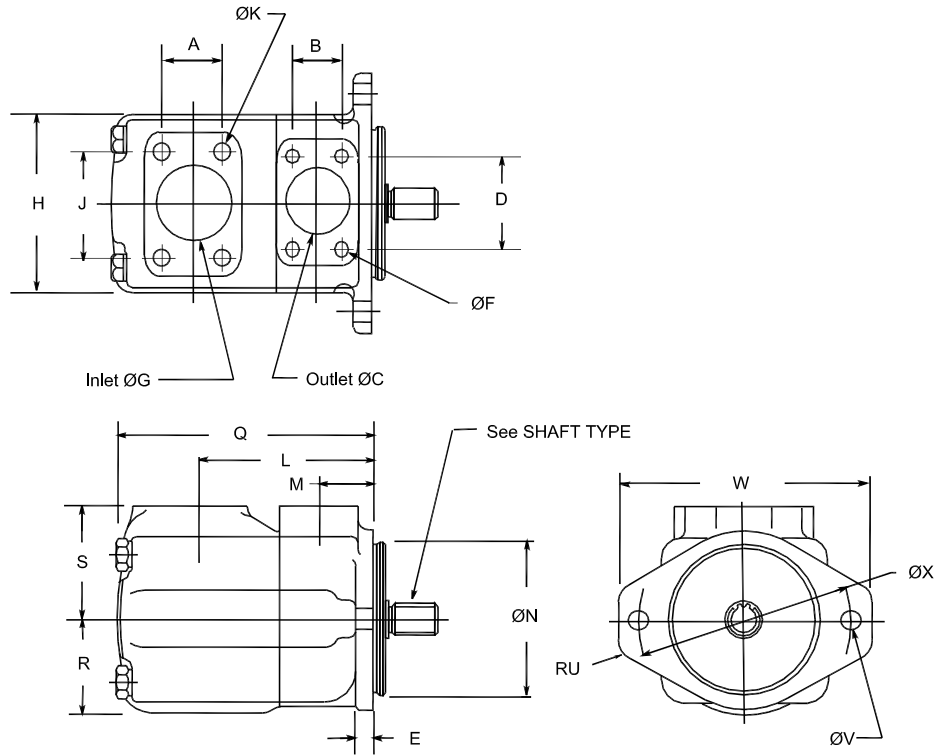
BODY	A	B	ØC	D	E	ØG	H	J	L	M	ØN
	1.41	1.03	1.00	2.06	0.50	1.50	4.62	2.75	4.76	1.50	4.000/3.998
PORT CONN.	Q		R	S	RU		ØV x 2	W	ØX		
	6.38	2.50	3.00	0.55	0.56	6.88	5.75				
SHAFT TYPE	ØF x 4 Holes		ØK x 4 Holes		Outlet Flange		Inlet Flange				
	3/8"-16UNC-2B x 0.75		1/2"-13UNC-2B x 0.94		FL1-8-		FL1-12-				
SHAFT TYPE	Shaft Type	AA	BB	CC	ØDD		EE	FF Key Width x Length			
	1	2.32	.375	.437	.875/.874		.966/.961	.187x1.25			
	86	3.06	.375	.437	.999/.998		1.11/1.10	.250x2.00			
	Shaft Type	AA	BB	CC	ØDD	EE	Spline Data Code				
11	1.75	.375	.437	1.09	.156	A (See Below Chart)					
Spline Data Code	Number of Teeth	Pitch	Major Diameter	Form Diameter	Minor Diameter	Minor Diameter					
A	13	16/32	.873/.872	.749	.734/.723	Major dia. fit					

35VQ INSTALLATION DIMENSION



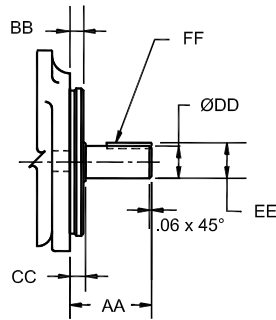
BODY	A	B	ØC	D	E	ØG	H	J	L	M	ØN
	1.69	1.19	1.25	2.31	0.63	2.00	5.50	3.06	4.94	1.50	5.000/4.998
PORT CONN.	Q		R	S	RU		ØV x 2	W	ØX		
	7.28	2.75	3.25	0.63	0.69	8.38	7.13				
SHAFT TYPE	ØF x 4 Holes		ØK x 4 Holes		Outlet Flange		Inlet Flange				
	7/16"-14UNC-2B x 0.88		1/2 "-13UNC-2B x 0.88		F1-10-		F1-16-				
	Shaft Type	AA	BB	CC	ØDD	EE	FF Key Width x Length				
	1	2.88	.375	.437	1.250/1.248	1.392/1.382	.313x1.50				
86	3.88	.375	.437	1.374/1.373	1.518/1.508	.312x2.13					
Shaft Type	AA	BB	CC	ØDD	EE	Spline Data Code					
11	2.31	.375	.437	1.38	.25	D (See Below Chart)					
Spline Data Code	Number of Teeth	Pitch	Major Diameter	Form Diameter	Minor Diameter	Minor Diameter					
D	14	12/24	1.248/1.247	1.07	1.063/1.050	Major dia. fit					

45VQ INSTALLATION DIMENSION

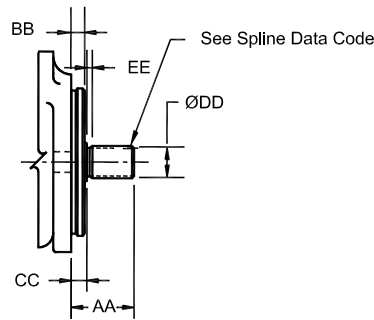


SHAFT TYPE

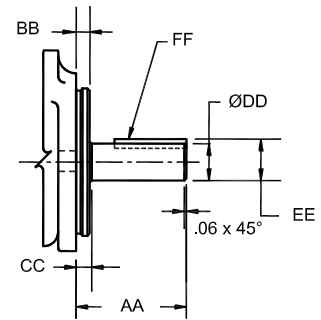
#1 Straight Shaft



#11 Splined Shaft

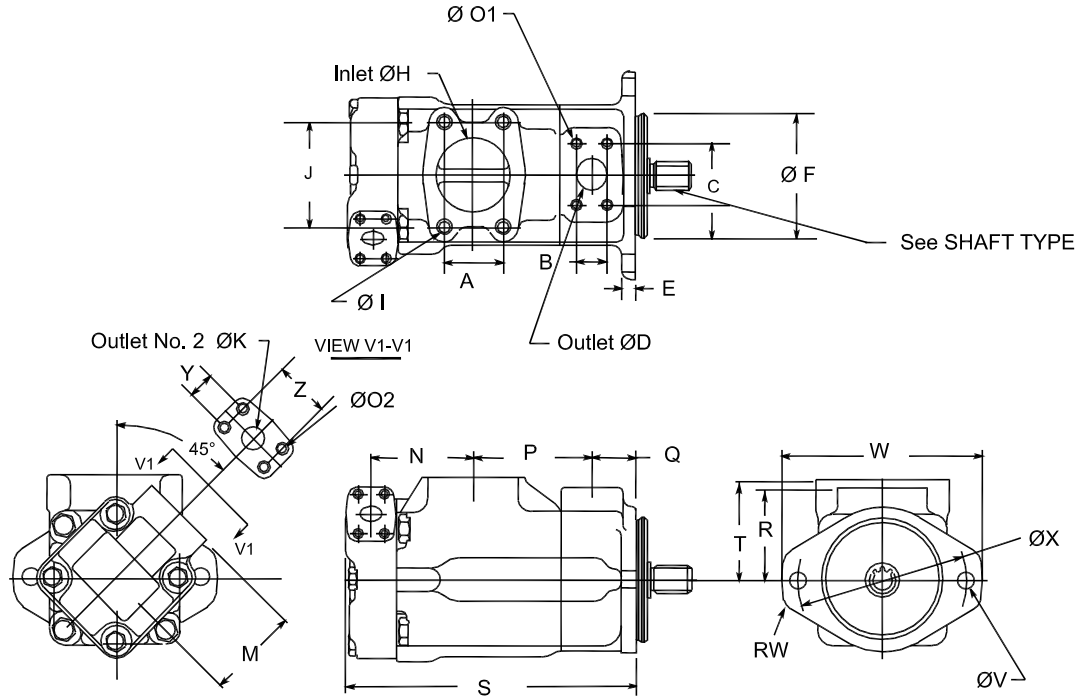


#86 Straight Shaft



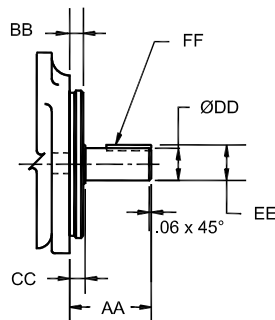
	A	B	ØC	D	E	ØG	H	J	L	M	ØN	
BODY	2.43	1.41	1.50	2.75	0.63	3.00	6.25	4.19	6.03	1.69	5.000/4.998	
	Q	R	S	RU	ØV x 2	W	ØX					
	8.50	3.25	3.69	0.63	0.69	8.38	7.13					
PORT CONN.	ØF x 4 Holes			ØK x 4 Holes			Outlet Flange		Inlet Flange			
	1/2"-13UNC-2B x 0.94			5/8 "-11UNC-2B x 1.18			F1-12-		F1-24-			
SHAFT TYPE	Shaft Type	AA	BB	CC	ØDD	EE	FF Key Width x Length					
	1	2.44	.500	.560	1.250/1.248	1.390/1.380	.312x1.12					
	86	3.44	.500	.560	1.499/1.498	1.669/1.659	.375x2.00					
	Shaft Type	AA	BB	CC	ØDD	EE	Spline Data Code					
	11	2.44	.500	.565	1.56	.38	D (See Below Chart)					
Spline Data Code	Number of Teeth	Pitch	Major Diameter	Form Diameter	Minor Diameter	Minor Diameter						
D	14	12/24	1.248/1.247	1.07	1.063/1.050	Major dia. fit						

2520VQ INSTALLATION DIMENSION

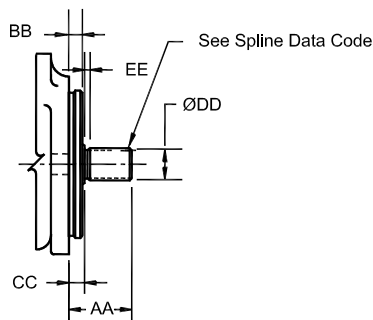


SHAFT TYPE

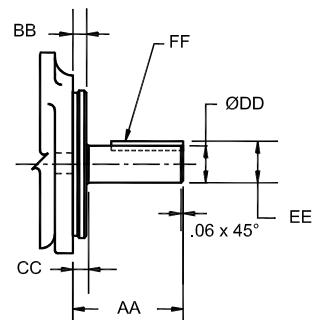
#1 Straight Shaft



#11 Splined Shaft

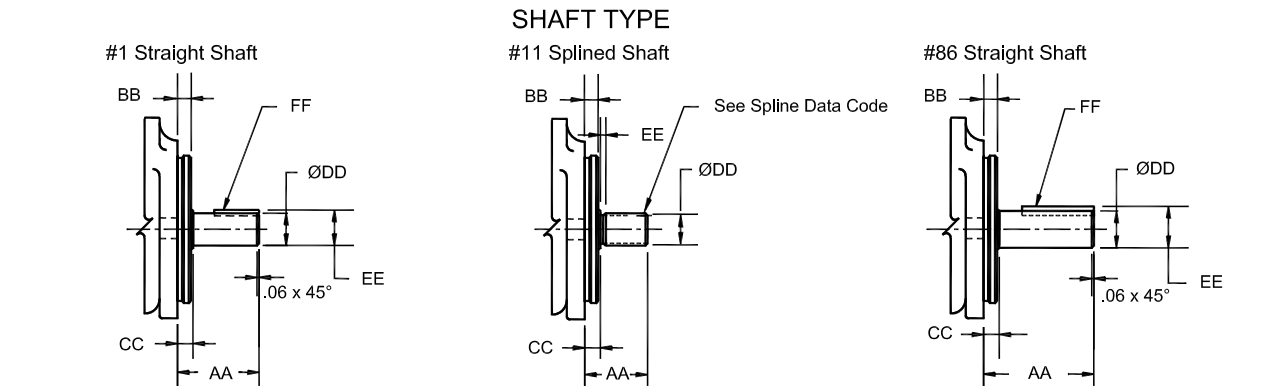
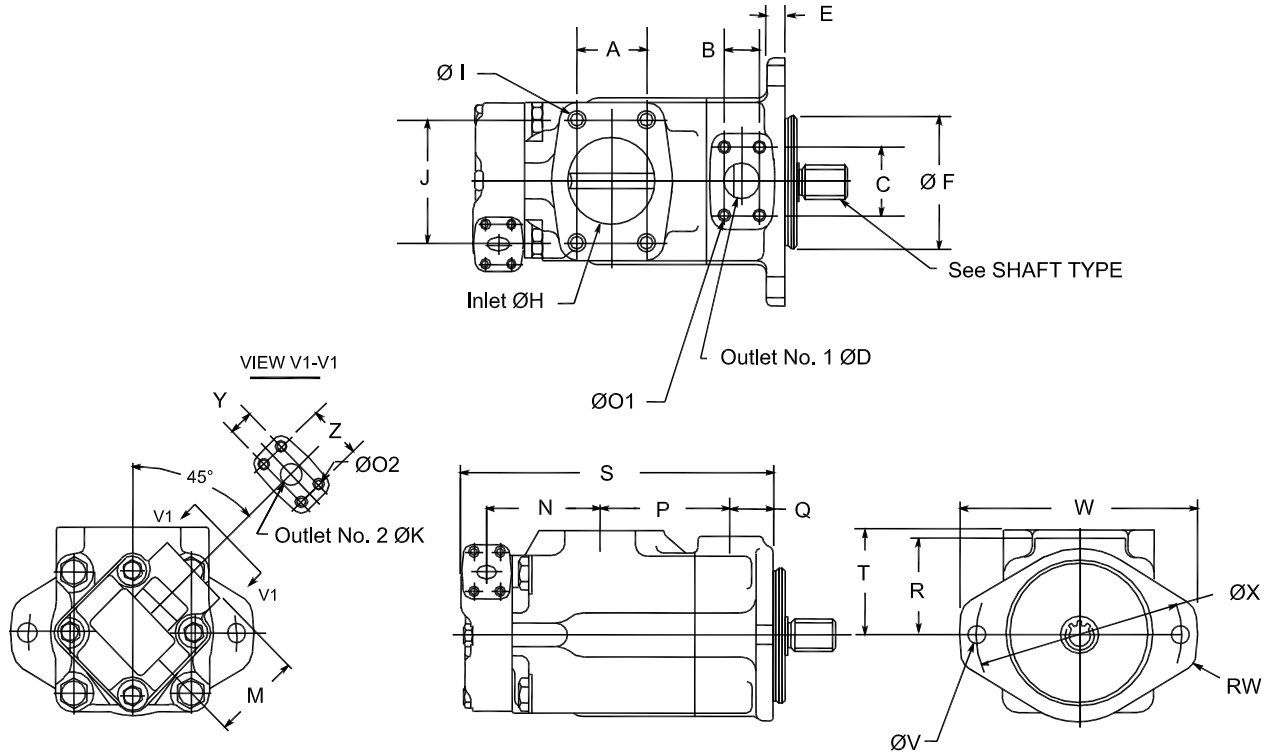


#86 Straight Shaft



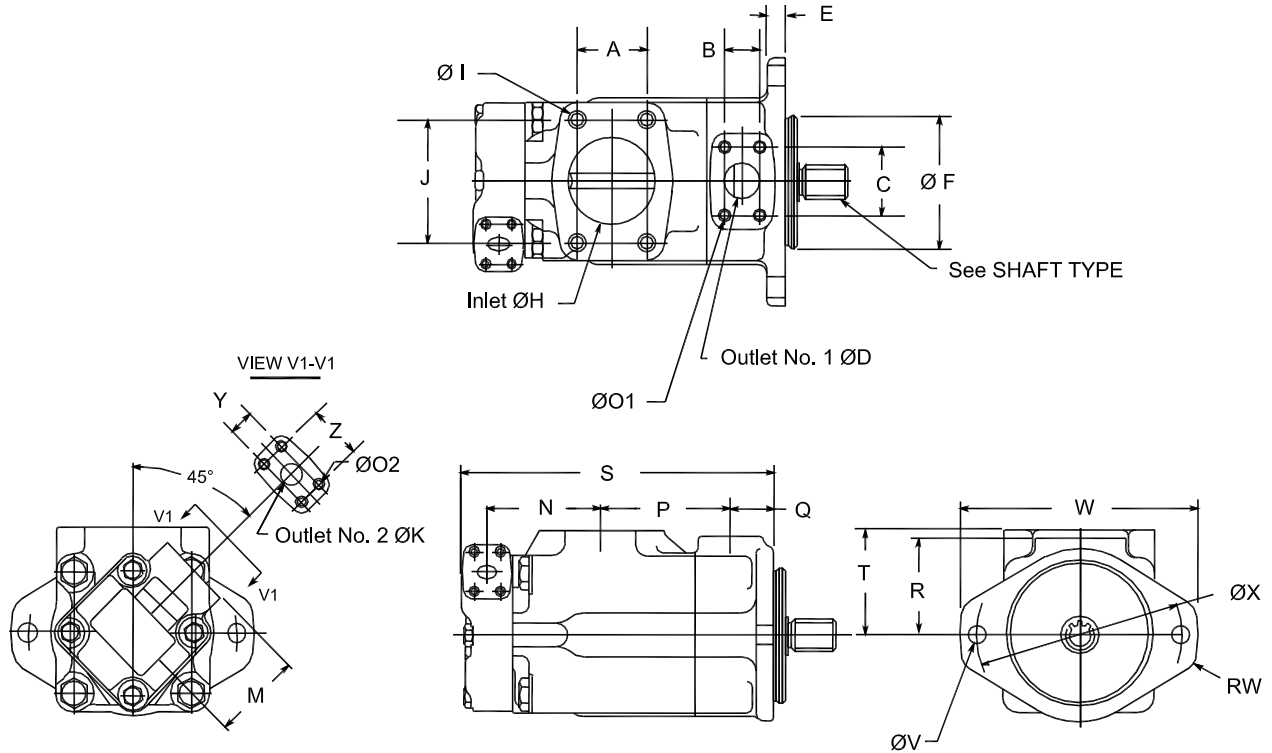
BODY	A	B	C	øD	E	øF	øH	J	øK	M	N	P	Q	R
		2.00	1.03	2.06	1.00	0.50	4.000/3.998	2.50	3.50	0.75	3.00	3.47	4.00	1.50
PORT CONN.	S	T	øV x 2	RW	W	øX	Y	Z						
	9.94	3.31	0.56	0.55	6.88	5.75	0.88	1.88						
SHAFT TYPE	øO1 x 4 Holes		øO2 x 4 Holes		øI x 4 Holes		Outlet No 1 Flange		Outlet No 2 Flange		Inlet Flange			
	3/8"-16UNC-2B x 0.75		3/8"-16UNC-2B x 0.75		1/2"-13UNC-2B x 0.94		F1-8-		F1-6-		F1-20-			
	Shaft Type	AA	BB	CC	øDD	EE	FF Key Width x Length							
	1	2.32	.375	.437	.875/.874	.966/.961	.187x1.25							
86	3.06	.375	.437	.999/.998	1.11/1.10	.250x2.00								
Shaft Type	AA	BB	CC	øDD	EE	Spline Data Code								
11	1.75	.375	.437	1.09	.156	A (See Below Chart)								
Spline Data Code	Number of Teeth	Pitch	Major Diameter	Form Diameter	Minor Diameter	Minor Diameter								
A	13	16/32	.873/.872	.749	.734/.723	Major dia. fit								

3520VQ INSTALLATION DIMENSION

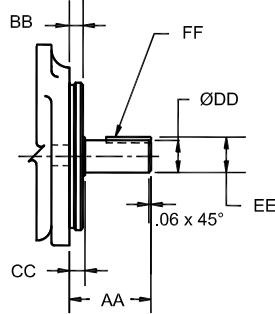


	A	B	C	øD	E	øF	øH	J	øK	M	N	P	Q	R	
BODY	2.44	1.19	2.31	1.25	0.62	5.000/4.998	3.00	4.19	0.75	3.00	3.92	4.50	1.50	3.25	
	S	T	øV x 2	RW	W	øX	Y	Z							
	10.9	3.50	0.69	0.63	8.38	7.13	0.88	1.88							
PORT CONN.	øO1 x 4 Holes			øO2 x 4 Holes			øI x 4 Holes			Outlet No 1 Flange		Outlet No 2 Flange		Inlet Flange	
	7/16"-14UNC-2B x 0.88			3/8"-16UNC-2B x 0.75			5/8"-11UNC-2B x 1.125			F1-10-		F1-6-		F1-24-	
SHAFT TYPE	Shaft Type	AA	BB	CC	øDD	EE	FF Key Width x Length								
	1	2.88	.375	.437	1.250/1.248	1.392/1.382	.313x1.50								
	86	3.88	.375	.437	1.374/1.373	1.518/1.508	.312x2.13								
	Shaft Type	AA	BB	CC	øDD	EE	Spline Data Code								
11	2.31	.375	.437	1.38	.25	D (See Below Chart)									
Spline Data Code	Number of Teeth	Pitch	Major Diameter	Form Diameter	Minor Diameter	Minor Diameter									
D	14	12/24	1.248/1.247	1.07	1.063/1.050	Major dia. fit									

3525VQ INSTALLATION DIMENSION

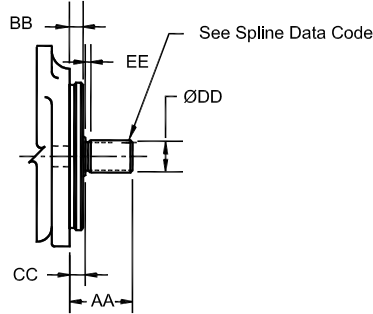


#1 Straight Shaft

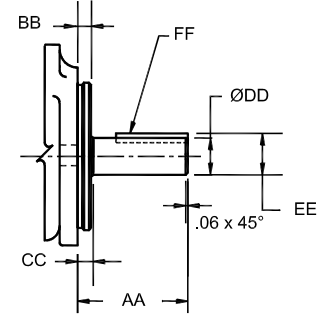


SHAFT TYPE

#11 Splined Shaft

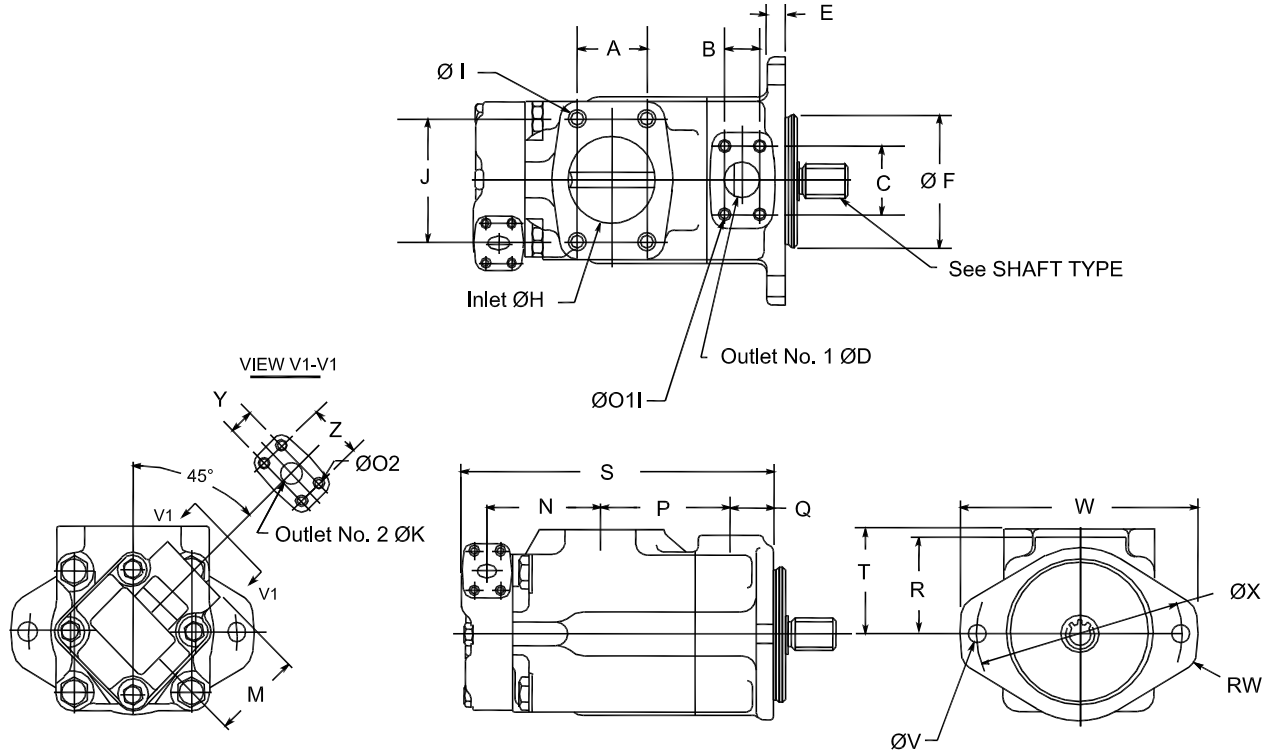


#86 Straight Shaft

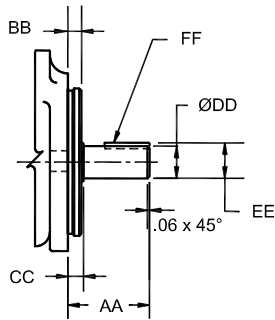


BODY	A	B	C	øD	E	øF	øH	J	øK	M	N	P	Q	R
		2.44	1.19	2.31	1.25	0.62	5.000/4.998	3.00	4.19	1.00	2.94	4.31	4.50	1.50
PORT CONN.	S	T	øV x 2	RW	W	øX	Y	Z						
	11.57	3.50	0.69	0.63	8.38	7.13	1.03	2.06						
SHAFT TYPE	øO1 x 4 Holes		øO2 x 4 Holes		øI x 4 Holes			Outlet No 1 Flange		Outlet No 2 Flange		Inlet Flange		
	7/16"-14UNC-2B x 0.88		3/8"-16UNC-2B x 0.66		5/8"-11UNC-2B x 1.125			F1-10-		F1-8-		F1-24-		
	Shaft Type	AA	BB	CC	øDD	EE	FF Key Width x Length							
	1	2.88	.375	.437	1.250/1.248	1.392/1.382	.313x1.50							
86	3.88	.375	.437	1.374/1.373	1.518/1.508	.312x2.13								
Shaft Type	AA	BB	CC	øDD	EE	Spline Data Code								
11	2.31	.375	.437	1.38	.25	D (See Below Chart)								
Spline Data Code	Number of Teeth	Pitch	Major Diameter	Form Diameter	Minor Diameter	Minor Diameter								
D	14	12/24	1.248/1.247	1.07	1.063/1.050	Major dia. fit								

4520VQ INSTALLATION DIMENSION

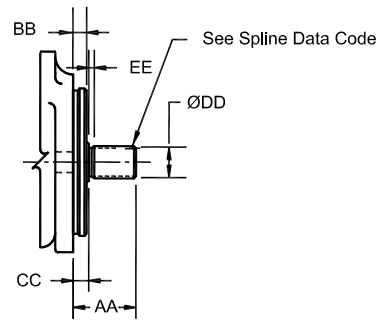


#1 Straight Shaft

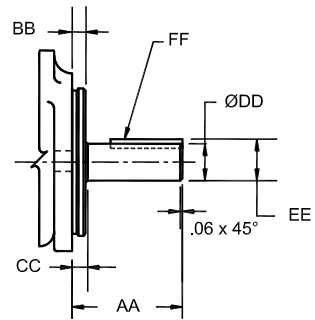


SHAFT TYPE

#11 Splined Shaft

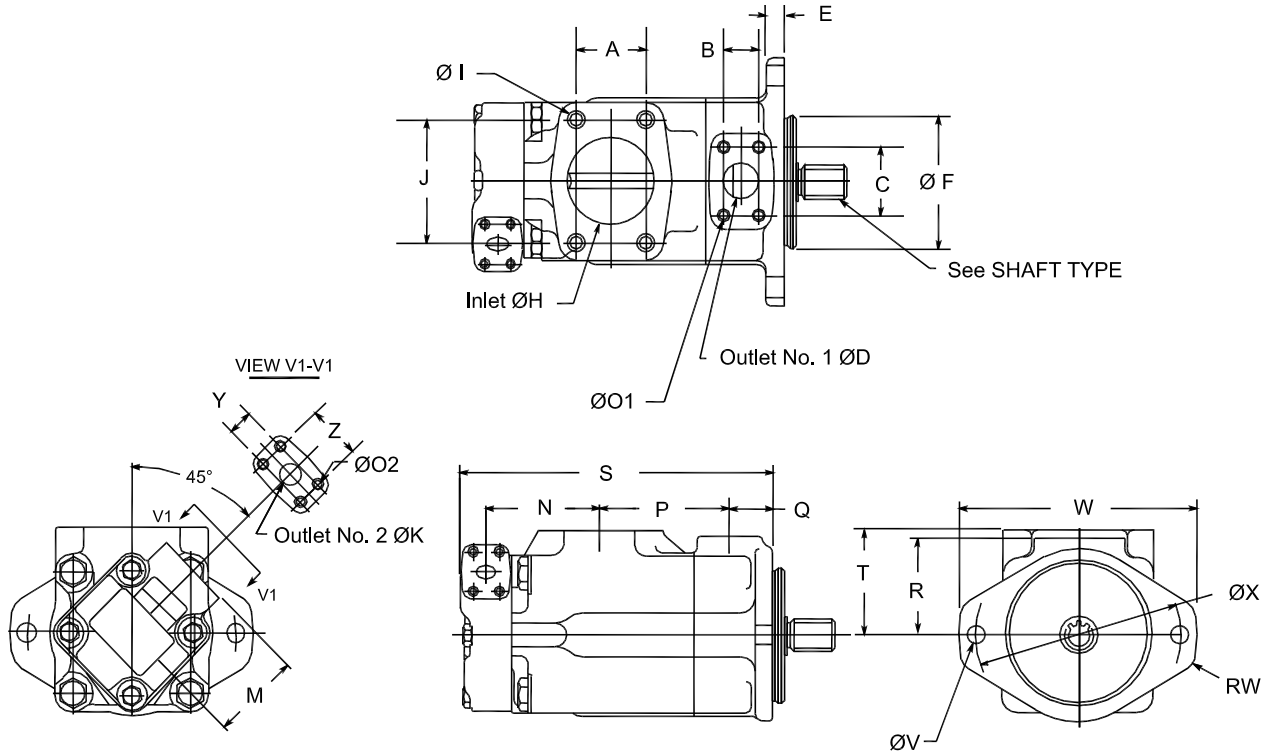


#86 Straight Shaft

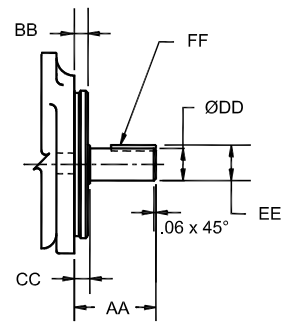


	A	B	C	ØD	E	ØF	ØH	J	ØK	M	N	P	Q	R	
BODY	2.75	1.41	2.75	1.50	0.62	5.000/4.998	3.50	4.75	0.75	3.00	4.72	4.70	1.69	3.69	
	S	T	ØV x 2	RW	W	ØX	Y	Z							
	12.08	4.03	0.69	0.63	8.38	7.13	0.88	1.88							
PORT CONN.	ØO1 x 4 Holes			ØO2 x 4 Holes			ØI x 4 Holes			Outlet No 1 Flange		Outlet No 2 Flange		Inlet Flange	
	12"-13UNC-2B x 0.94			3/8"-16UNC-2B x 0.75			5/8"-11UNC-2B x 1.25			F1-12-		F1-6-		F1-28-	
SHAFT TYPE	Shaft Type	AA	BB	CC	ØDD	EE	FF Key Width x Length								
	1	2.44	.500	.560	1.250/1.248	1.390/1.380	.312x1.12								
	86	3.44	.500	.560	1.499/1.498	1.669/1.659	.375x2.00								
	Shaft Type	AA	BB	CC	ØDD	EE	Spline Data Code								
11	2.44	.500	.565	1.56	.38	D (See Below Chart)									
Spline Data Code	Number of Teeth	Pitch	Major Diameter	Form Diameter	Minor Diameter	Minor Diameter									
D	14	12/24	1.248/1.247	1.07	1.063/1.050	Major dia. fit									

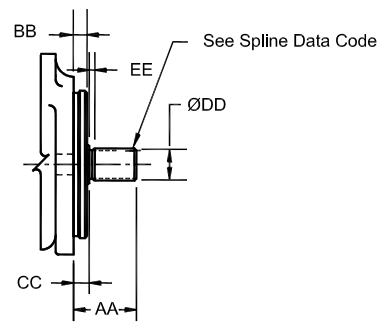
4525VQ INSTALLATION DIMENSION



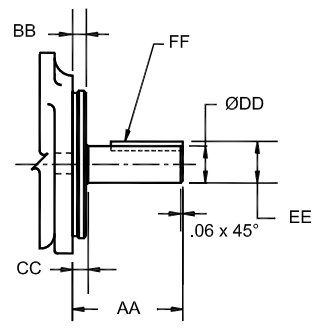
#1 Straight Shaft



#11 Splined Shaft

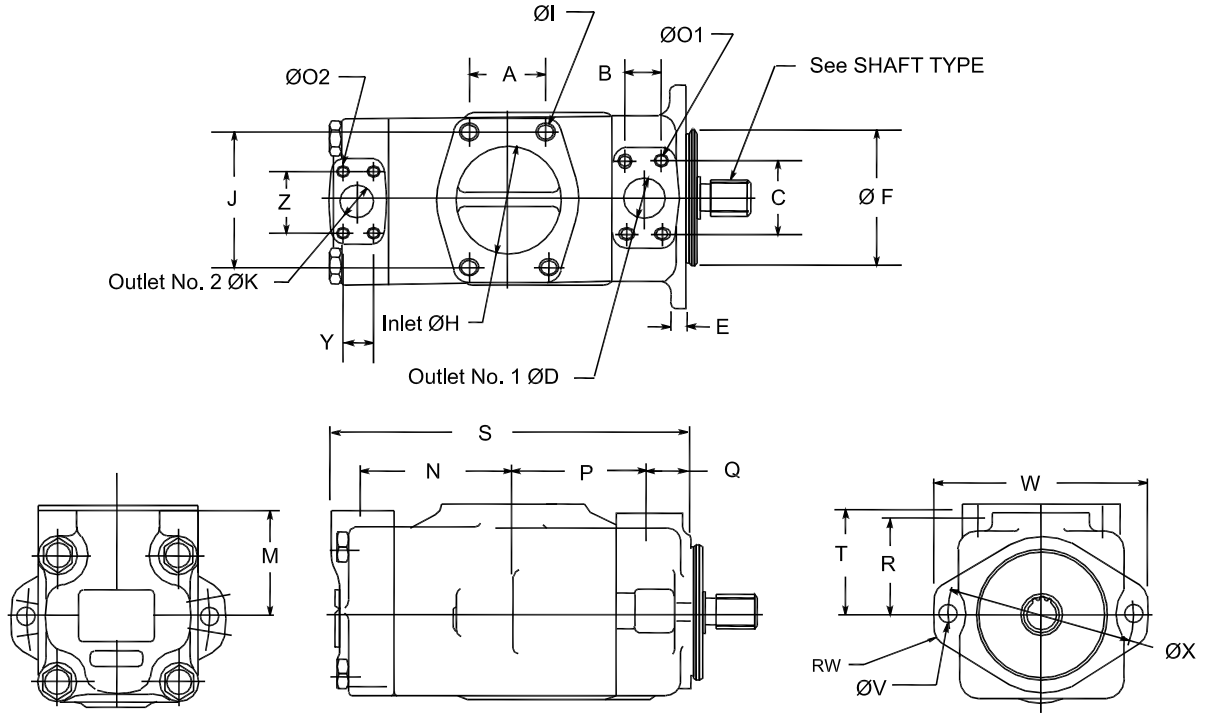


#86 Straight Shaft



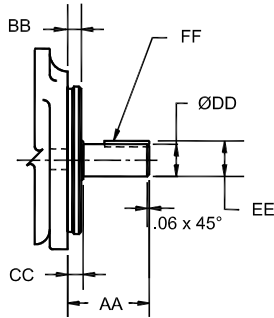
BODY	A	B	C	øD	E	øF	øH	J	øK	M	N	P	Q	R
		2.75	1.41	2.75	1.50	0.62	5.000/4.998	3.50	4.75	1.00	2.94	5.35	4.70	1.69
PORT CONN.	S	T	øV x 2	RW	W	øX	Y	Z						
	13.0	4.03	0.69	0.63	8.38	7.13	1.03	2.06						
SHAFT TYPE	øO1 x 4 Holes		øO2 x 4 Holes		øI x 4 Holes		Outlet No 1 Flange		Outlet No 2 Flange		Inlet Flange			
	12"-13UNC-2B x 0.94		3/8"-16UNC-2B x 0.66		5/8"-11UNC-2B x 1.25		F1-12-		F1-8-		F1-28-			
	Shaft Type	AA	BB	CC	øDD	EE	FF Key Width x Length							
	1	2.44	.500	.560	1.250/1.248	1.390/1.380	.312x1.12							
	86	3.44	.500	.560	1.499/1.498	1.669/1.659	.375x2.00							
Shaft Type	AA	BB	CC	øDD	EE	Spline Data Code								
11	2.44	.500	.565	1.56	.38	D (See Below Chart)								
Spline Data Code	Number of Teeth	Pitch	Major Diameter	Form Diameter	Minor Diameter	Minor Diameter								
D	14	12/24	1.248/1.247	1.07	1.063/1.050	Major dia. fit								

4535VQ INSTALLATION DIMENSION

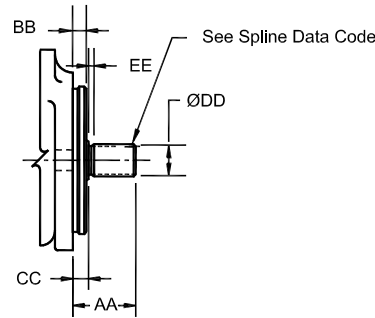


SHAFT TYPE

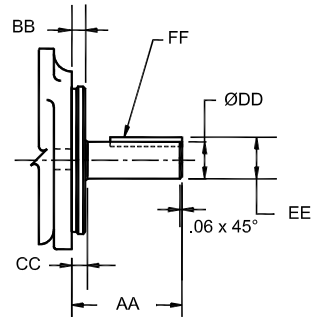
#1 Straight Shaft



#11 Splined Shaft

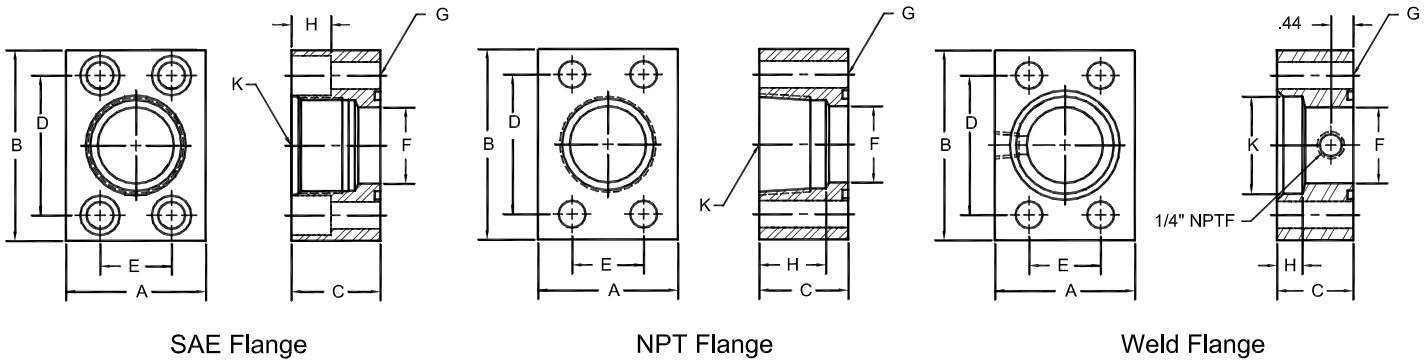


#86 Straight Shaft



	A	B	C	øD	E	øF	øH	J	øK	M	N	P	Q	R	
BODY	3.06	1.41	2.75	1.50	0.62	5.000/4.998	4.00	5.13	1.25	4.00	5.84	5.25	1.69	3.69	
	S	T	øV x 2	RW	W	øX	Y	Z							
	13.9	4.03	0.69	0.63	8.38	7.13	1.19	2.31							
PORT CONN.	ØO1 x 4 Holes			ØO2 x 4 Holes			Ø I x 4 Holes			Outlet No 1 Flange		Outlet No 2 Flange		Inlet Flange	
	1/2"-13UNC-2B x 0.94			7/16"-14UNC-2B x 0.88			5/8"-11UNC-2B x 1.25			F1-12-		F1-10-		F1-32-	
SHAFT TYPE	Shaft Type	AA	BB	CC	øDD	EE	FF Key Width x Length								
	1	2.44	.500	.560	1.250/1.248	1.390/1.380	.312x1.12								
	86	3.44	.500	.560	1.499/1.498	1.669/1.659	.375x2.00								
	Shaft Type	AA	BB	CC	øDD	EE	Spline Data Code								
11	2.44	.500	.565	1.56	.38	D (See Below Chart)									
Spline Data Code	Number of Teeth	Pitch	Major Diameter	Form Diameter	Minor Diameter	Minor Diameter									
D	14	12/24	1.248/1.247	1.07	1.063/1.050	Major dia. fit									

SAE 4-Bolt Flange



SAE Straight Threaded	Flange Size	A	B	C	D	E	F	G	H	K	BOLT SIZE ①
F1-6-S	3/4	1.75	2.62	1.5	1.875	0.875	0.75	0.41	0.59	1 1/16-12	3/8-16 x 1 1/2
F1-8-S	1	2	2.82	1.5	2.062	1.031	1	0.41	0.59	1 5/16-12	3/8-16 x 1 1/2
F1-10-S	1 1/4	2.5	3.19	1.5	2.312	1.188	1.25	0.47	0.71	1 5/8-12	7/16-14 x 1 1/2
F1-12-S	1 1/2	2.75	3.75	1.75	2.75	1.406	1.5	0.53	0.78	1 7/8-12	1/2-13 x 1 3/4

NPTF Pipe Threaded	Flange Size	A	B	C	D	E	F	G	H	K (NPTF)	BOLT SIZE ①
F1-6-P	3/4	1.75	2.62	1.25	1.88	0.88	0.75	0.41	1.06	3/4	3/8-16 x 2
F1-8-P	1	2.00	2.82	1.50	2.06	1.03	1.00	0.41	1.25	1	3/8-16 x 2 1/4
F1-10-P	1 1/4	2.50	3.19	1.50	2.31	1.19	1.25	0.47	1.31	1 1/4	7/16-14 x 2 1/4
F1-12-P	1 1/2	2.75	3.75	1.75	2.75	1.41	1.50	0.53	1.31	1 1/2	1/2-13 x 2 1/2
F1-16-P	2	3.25	4.00	1.75	3.06	1.69	1.94	0.53	1.31	2	1/2-13 x 2 1/2
F1-20-P ②	2 1/2	4.00	4.50	2.00	3.50	2.00	2.44	0.53	1.75	2 1/2	1/2-13 x 2 3/4
F1-24-P ③	3	4.50	5.50	2.25	4.19	2.44	2.94	0.66	2.00	3	5/8-11 x 3 1/2

Pipe Welded	Flange Size	A	B	C	D	E	F	G	H	K	BOLT SIZE ①
F1-8-W	1	2.00	2.82	1.25	2.062	1.031	1.00	0.41	0.50	1.335	3/8-16 x 2
F1-10-W	1 1/4	2.50	3.19	1.25	2.312	1.188	1.25	0.47	0.50	1.680	7/16-14 x 2
F1-12-W	1 1/2	2.75	3.75	1.25	2.750	1.406	1.50	0.53	0.50	1.920	1/2-13 x 2
F1-16-W	2	3.25	4.00	1.50	3.062	1.688	1.94	0.53	0.62	2.411	1/2-13 x 2 1/4
F1-20-W ②	2 1/2	4.00	4.50	1.75	3.500	2.000	2.44	0.53	0.75	2.911	1/2-13 x 2 1/2
F1-24-W ③	3	4.50	5.31	2.00	4.188	2.438	2.94	0.66	0.75	3.540	5/8-11 x 3
F1-28-W ④	3 1/2	5.00	6.00	1.50	4.750	2.750	3.44	0.66	0.75	4.045	5/8-11 x 2 1/2
F1-32-W ④	4	5.50	6.38	1.50	5.125	3.062	3.94	0.66	0.75	4.550	5/8-11 x 2 1/2

- ① Order Separately
- ② 2500 PSI Max
- ③ 2000 PSI Max
- ④ 500 PSI Max